



City of Takoma Park

Bikeways Program – FY16 Report

Program Overview

The City-maintained bicycle network and facilities consists of:

35 bike racks in public rights-of-way	
26 bike racks at City-maintained parks and facilities	(12 installed in FY16)
2 bike repair stands maintained by the City	(2 installed in FY16)
0.4 miles of off-street trail	
5.5 miles of on-street signed/stripped routes	(1.1 miles improved in FY16)

Since 2007, there have been 32 bike racks installed at local public schools through the City's Safe Routes to School program. Within the City boundary, Montgomery County maintains bike facilities, specifically the off-street stream valley trails (M-NCPPC) and the five bike share stations (MCDOT). Data released in FY16 indicates the proportion of residents who bicycle to work around Takoma Park continues to rise:

Workers By Means of Transportation to Work for 20912 Zip Code (ACS 5-year Estimates)					
	2011	2012	2013	2014	3-yr trend
Total Workers	14,287	14,289	13,819	14,330	0.3%
Walk to Work	3.6%	4.0%	3.7%	3.7%	2.8%
Bike to Work	0.6%	1.1%	1.6%	1.7%	183.3%
Transit to Work	32.1%	32.9%	31.2%	31.0%	-3.4%

FY16 Highlights

During FY16, the City of Takoma Park:

- installed its first bicycle repair stands.
- conducted its first systematic bicycle counts.
- nearly doubled bicycle parking at City-maintained parks and facilities.
- installed sharrows on Carroll Avenue (MD-195) and Takoma Avenue.
- awarded \$100,000 to purchase two new bike share stations.
- awarded \$60,000 to develop 30% design plans for the New Ave Bikeway project.

FY16 Capital Expenditures on Bikeways Projects

Maryland Bikeways Program Funds (state grant)	\$17,020.00
City of Takoma Park (General Fund)	\$5,212.00

Total **\$22,232.00**

FY16 Projects and Activities (7/1/2015 – 6/30/2016)

1. Improvements to Existing Facilities

- Installed 8 bike racks at Takoma Park Community Center and Library (MD Bikeways funding).
- Installed 4 bike racks at Takoma Park Recreation Center (MD Bikeways funding).
- Installed 2 bike repair stands at:
 - Takoma Park Police Station entrance; and
 - Sligo Creek Trail at New Hampshire Avenue.
- Installed 28 sharrows on Carroll Avenue and 12 sharrows on Takoma Avenue (MD Bikeways funding)

2. New Plans and Projects

- Final Plans for Ethan Allen Gateway Streetscape Project completed, includes bike lanes.
- Awarded \$60,000 in MWCOG TLC Technical Assistance for New Ave Bikeway 30% design plans.
- Funding application submitted to the Maryland Bikeways program for installation of lights along 1,000 feet of the Metropolitan Branch Trail (awaiting response).

3. Bike Safety, Education and Outreach

- City staff conducted 17 Bike Rodeos at local schools, distributed 50 helmets and two bikes to students, and trained 14 people to use the bike trailer for educational events.
- City staff coordinated Bike To School Day at five schools involving over 200 students.
- City staff coordinated Bike To Work Day at three pit stops in Takoma Park, involving 203 registered participants.
- City staff provided the iCan Shine Camp, with 29 participants and 53 local volunteers.

4. Capital Bikeshare

- Within Montgomery County, usage at Takoma Park's five Capital Bikeshare stations is strong and steady. In FY16, there were:
 - 14,340 total trip segments at the five stations in the city, a 1.8% increase over FY15; and
 - 230 active annual Capital Bikeshare members in the 20912 zipcode at the end of FY16, an 8% increase from the previous year.
- \$100,000.00 funding award from Maryland Bikeways program for two new Bikeshare stations at the Takoma/Langley Crossroads and the Takoma Park Recreation Center on New Hampshire Avenue.

5. Bike Counts

- Bike Counts were conducted in September and October at three locations in the Takoma Park during the morning and evening peak hours (summaries enclosed):
 - East West Highway (MD-410) and New Hampshire Avenue (MD-650);
 - Philadelphia Avenue (MD-410) and Maple Avenue; and
 - Takoma Junction.

6. Montgomery County Bicycle Master Plan

- City staff has coordinated with Montgomery County Planning staff on key milestones of the planning process, including leading a bike tour of Takoma Park before the plan kicked off in August.

7. WMATA/DDOT/MCDOT/PGDPWT Projects

- City sent letter of support to Montgomery County Planning Board regarding Mandatory Referral review of the Metropolitan Branch Trail extension plans in Silver Spring.

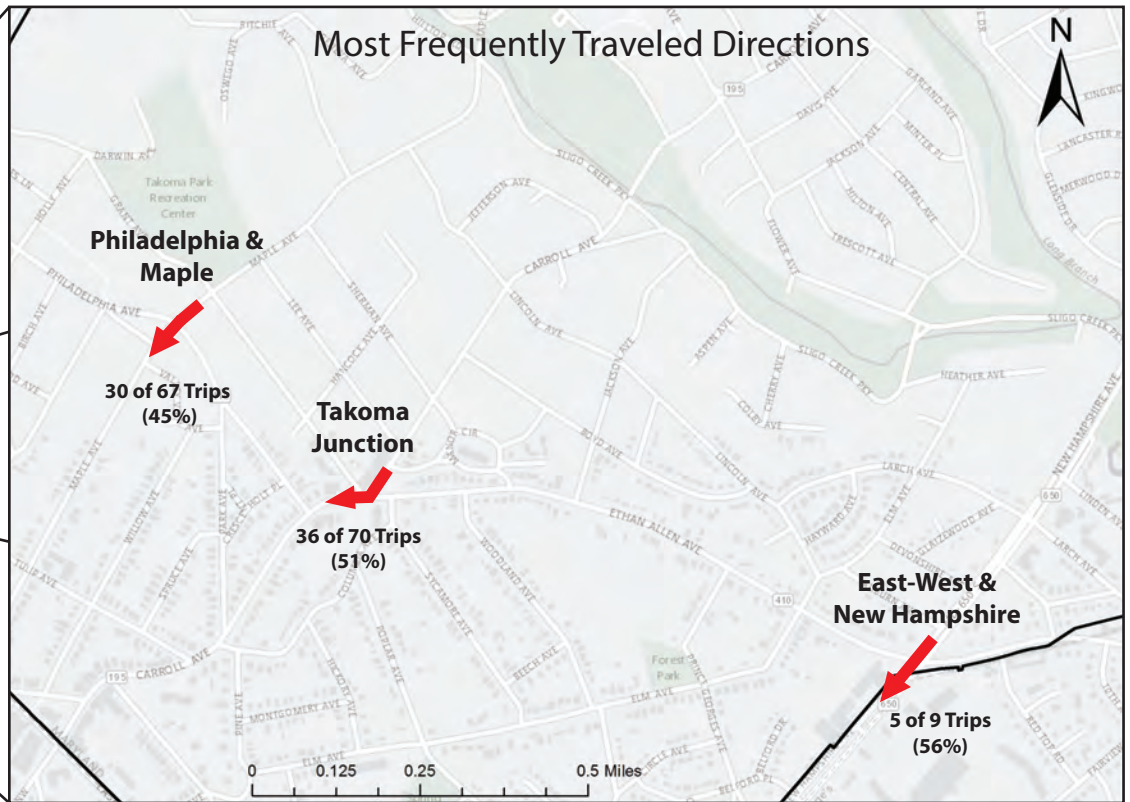
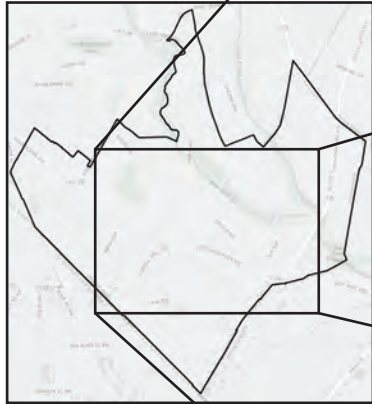
8. Liaise with Safe Roadways Committee

- Attended 2 Safe Roadways Committee Meetings to discuss:
 - public open space plans and FY16 MD Bikeways grant application for two new bikeshare stations (7/21/2015); and
 - FY17 funding applications and Montgomery County Bicycle Master Plan (4/18/2016).



Takoma Park AM Bicycle Count Overview, Summer/Fall 2015

Housing & Community Development



146 bicyclists counted at three locations:

9/9/2015 (6:30-9:15 AM), 74°F, mostly sunny

- Philadelphia Avenue & Maple Avenue (67)
- East-West Highway & New Hampshire Avenue (9)

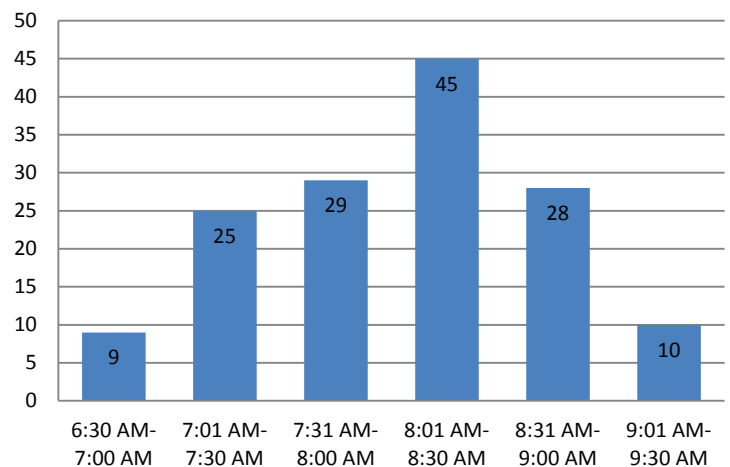
10/7/2015 (7-9:30 AM), 57°F, cloudy

- Takoma Junction (70)

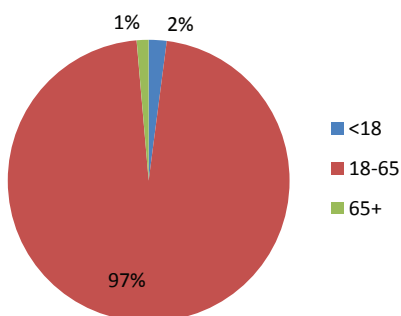
Notes:

- Counted cyclists riding both on road and on sidewalks.
- Only counted cyclists actively riding, including pedestrians that began riding at count location (e.g. bikeshare station).
- Bikes with multiple riders counted as one cyclist (e.g. rider with occupied child seat).

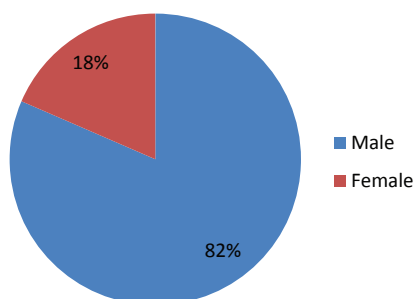
Count of Cyclists by Time, All Locations



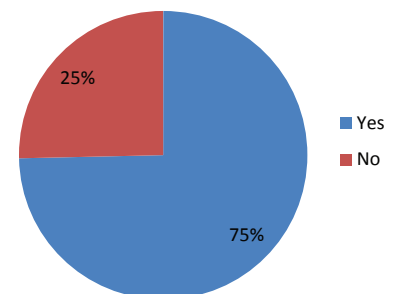
Estimated Age of Cyclists



Gender of Cyclists



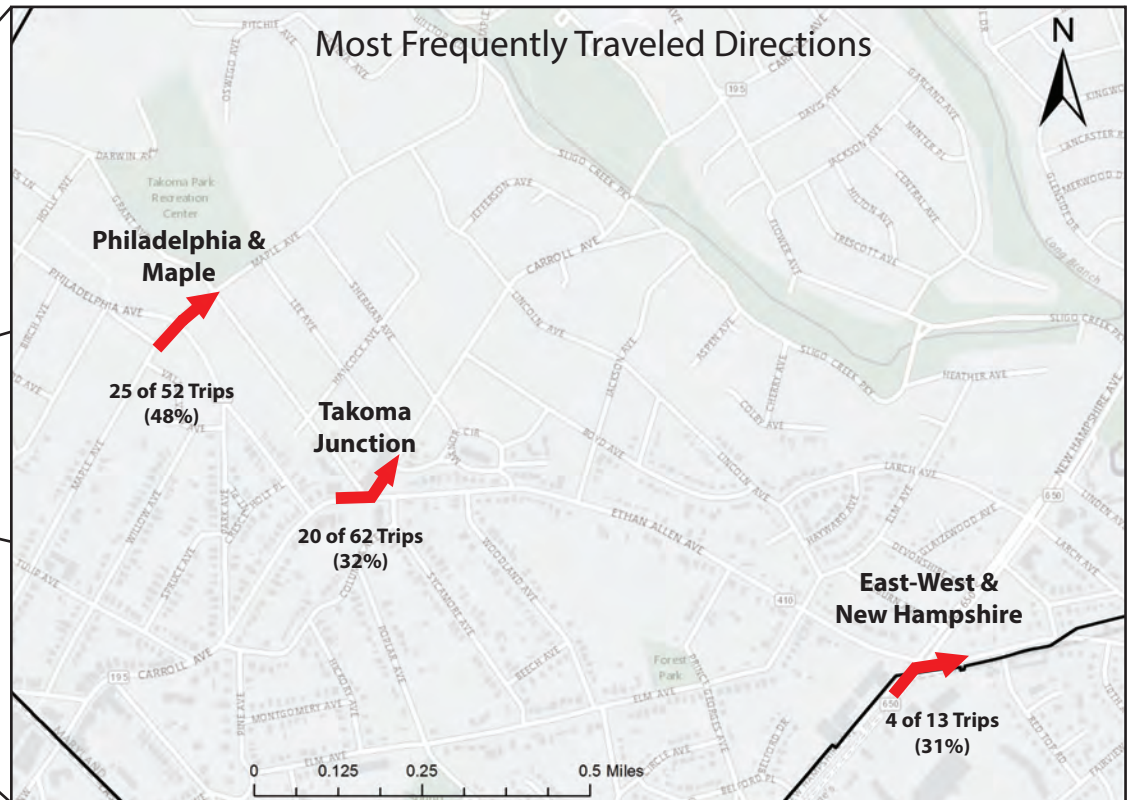
Helmet Usage





Takoma Park PM Bicycle Count Overview, Summer/Fall 2015

Housing & Community
Development



127 bicyclists counted at three locations:

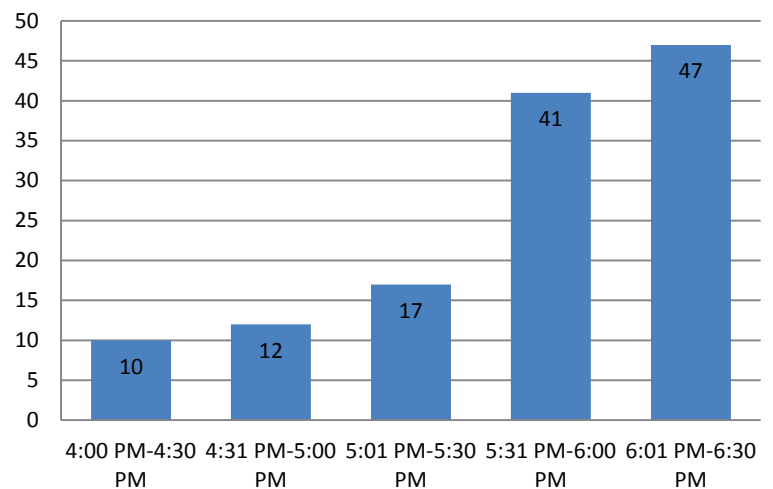
9/15/2015 (4:00-6:00 PM), 82°F, sunny and clear
 - Philadelphia Avenue & Maple Avenue (52)
 - East-West Highway & New Hampshire Avenue (13)

10/7/2015 (4:30-6:30 PM), 77°F, sunny
 - Takoma Junction (62)

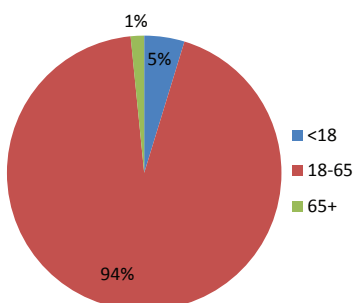
Notes:

- Counted cyclists riding both on road and on sidewalks.
- Only counted cyclists actively riding, including pedestrians that began riding at count location (e.g. bikeshare station).
- Bikes with multiple riders counted as one cyclist (e.g. rider with occupied child seat).

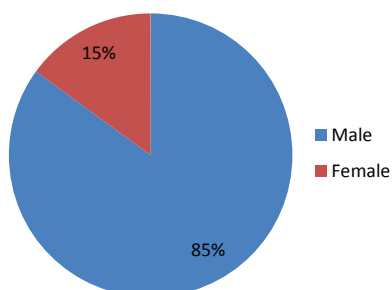
Count of Cyclists by Time, All Locations



Estimated Age of Cyclists



Gender of Cyclists



Helmet Usage

